

South Tampa Academy @ Monroe Middle Magnet

Parent Guide



School Supply List

School Year: 2022-2023

ALL STUDENTS WILL BE PROVIDED A 3 INCH BINDER, DIVIDERS, AND PENCIL POUCH

Additional Supplies include:

- ⇒ Hand held pencil sharpener
- ⇒ Pencils and pens
- ⇒ Highlighters
- ⇒ Notebook paper
- ⇒ Dry erase markers
- ⇒ Colored pencils



NOTE: Individual teachers may have specific supply requests not included in list above.



Student Name:		Weekly Planner				Feb. 8-Feb. 12	
Time	Monday 2/8	Tuesday 2/9	Wednesday 2/10	Thursday 2/11	Friday 2/12		
1 st Period Subject	CW:	CW:	CW:	CW:	No School		
	HW:	HW:	HW:	HW:			
2 nd Period Subject	CW:	CW:	CW:	CW:	No School		
	HW:	HW:	HW:	HW:			
3 rd Period Subject	CW:	CW:	CW:	CW:	No School		
	HW:	HW:	HW:	HW:			
4 th Period Subject	CW:	CW:	CW:	CW:	No School		
	HW:	HW:	HW:	HW:			
5 th Period Subject	CW:	CW:	CW:	CW:	No School		
	HW:	HW:	HW:	HW:			
6 th Period Subject	CW:	CW:	CW:	CW:	No School		
	HW:	HW:	HW:	HW:			
7 th Period Subject	CW:	CW:	CW:	CW:	No School		
	HW:	HW:	HW:	HW:			
8 th Period Subject	CW:	CW:	CW:	CW:	No School		
	HW:	HW:	HW:	HW:			

Did you know that students are more likely to retain information if they put it into their own words.?

Rev. Concepts Learned in Class	
1 st Period Subject	
2 nd Period Subject	
3 rd Period Subject	
4 th Period Subject	
5 th Period Subject	
6 th Period Subject	
7 th Period Subject	
8 th Period Subject	

In an effort to help our students get both organized and own their learning, each student on campus will have a section at the front of their 3 inch binder where they can keep important information and weekly planner sheets.

The planner sheets were designed by students, for students, to help track not only what they do in class each day, but the key concepts they have learned each week.



WHY IB



Critical thinking



Balanced programme



Recognised worldwide

How is an IB School Different

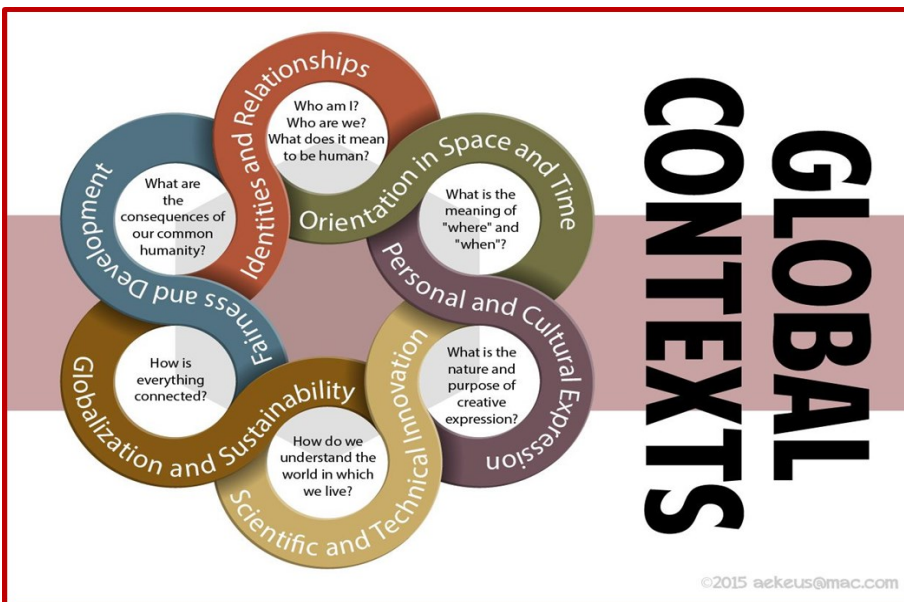
Students at an International Baccalaureate (IB) World School are given a unique education. At the heart of an IB education are passionate lifelong learners who believe that how you learn and why you are learning is as important as what you study in school. Based on ten core values, The Learner Profile, the IB curriculum strives to create globally minded individuals who will become leaders in their community.

Please take a moment to watch "What is an IB Education?" to learn about the IB Core Values and Principles.

<https://www.youtube.com/watch?v=9LuuJa3t-m8>

IB Middle Years Program

The Middle Years Program (MYP) is a challenging framework that encourages students to make practical connections between their studies and the real world. In other words, to make meaningful global connections. It encourages students to explore various topics



Resource Links

South Tampa Academy @ Monroe IB Candidate Magnet Information

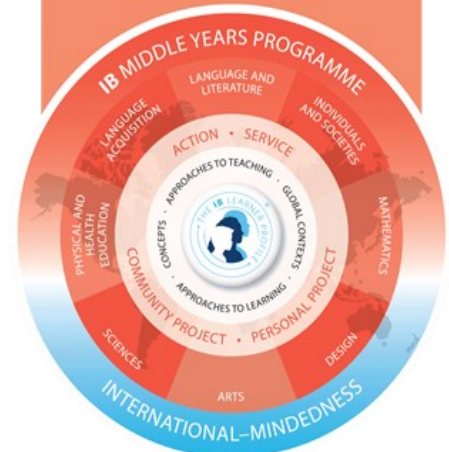
[South Tampa Academy at Monroe Middle Magnet / Homepage \(hillsboroughschools.org\)](http://hillsboroughschools.org)

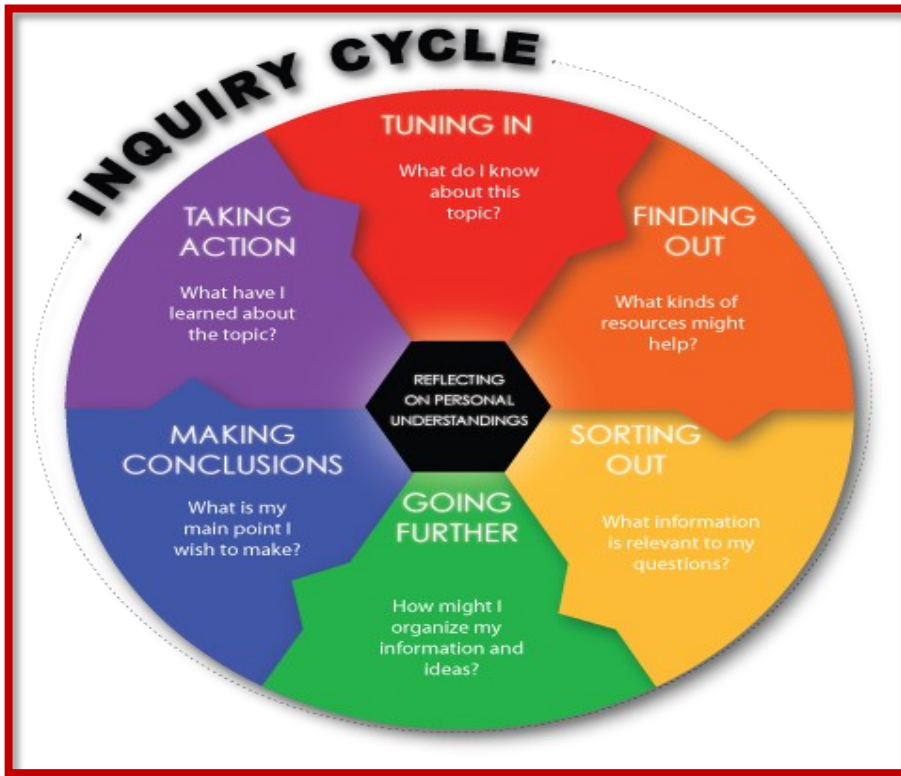
Benefits of IB

[Benefits of the IB - International Baccalaureate® \(ibo.org\)](http://ibo.org)



IB-MYP is a conceptual curriculum framework for students between the ages of 11-16 years. The MYP aims to develop active learners and internationally-minded young people who can empathise with others and pursue lives of purpose and meaning. The programme empowers students to inquire into a wide range of issues and ideas of significance locally, nationally and globally. The result is young people who are creative, critical and reflective thinkers.





Programming Robots in order to play Hungry Hippo.



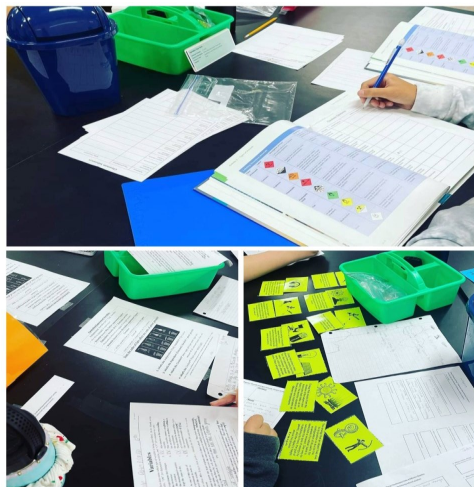
The Importance of Inquiry & Collaboration

Inquiry-based learning helps students make their own connections about what they learn. Their curiosity helps them engage and gain a deeper understanding of topics and content, instead of primarily memorizing and recalling rules, ideas or formulas.

When student collaboration is added to a lesson it strengthens the inquiry model by encouraging students to talk through ideas and solutions. As a result, varying viewpoints and approaches to solving problems are honored.



Testing the force of Magnetism in Science



Collaborating in Science

5 Benefits of Inquiry-Based Learning

- It nurtures passions and talents. ...
- It increases their motivation and engagement. ...
- It allows them to develop research skills. ...
- It fortifies the importance of asking questions. ...
- It allows children to take ownership of their education.



IB Students Make Global Connections

IB students are encouraged to understand the community and world in which they live. This begins with the inquiry process where students are asked to study concepts in context. Global contexts provide a common language for powerful contextual learning, identifying specific settings, events or circumstances. Every unit of study utilizes one of the IB Global Contexts.



The Six I.B. Global Contexts

- Identities and Relationships
- Orientation in Space and Time
- Personal and Cultural Expression
- Scientific and Technical Innovation
- Globalization and Sustainability
- Fairness and Development



APPROACHES TO LEARNING

How can I be an effective learner?

COMMUNICATION



INTERACTION
I can exchange thoughts, messages and information effectively through interaction.



LANGUAGE
I can read, write and use languages to communicate information effectively.

COLLABORATION



COLLABORATION
I can work effectively with others.

RESEARCH



INFORMATION LITERACY
I can find, interpret, judge and create information.



MEDIA LITERACY
I can interact with media to use and create ideas and information.

SELF-MANAGEMENT



AFFECTIVE SKILLS
I can manage my own state of mind, concentrate and be focused. I can learn from mistakes and problems.



ORGANIZATION SKILLS
I can manage my time and tasks effectively. I use technology well.



REFLECTION
I can (re)consider the process of learning. I can choose and use effective ATL skills.

THINKING



CRITICAL THINKING
I can analyse and evaluate issues and ideas.



CREATIVE THINKING
I can generate new ideas and perspectives.



TRANSFER
I can use knowledge and skills in new contexts.

ATL Skill clusters from MYP-FPIP (2014) @silyr (icons by Freepik on Flaticon)



Are you an IB Learner?



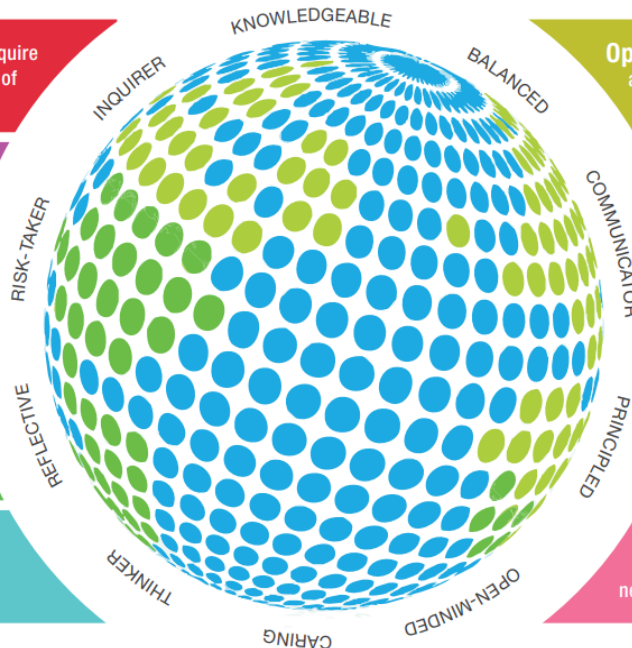
Inquirer: You develop your natural curiosity, acquire skills to research for answers and expansion love of learning.

Knowledgeable: You explore concepts, ideas, and issues that have local and global significance.

Balanced: You maintain equilibrium of your intellectual, physical, and emotional needs.

Communicator: You express your ideas and opinions clearly in different ways and languages using technology, art, music, and drama.

Principled: You act with integrity and honesty, respect the dignity of others, and take responsibility for your actions.



Open-minded: You appreciate your own culture and personal history, and are open to the perspectives and traditions of others.

Caring: You show compassion and respect and act to make a positive difference in the lives of others and the environment.

Thinker: You apply your skills to critically and creatively approach complex problems and make logical, ethical decisions.

Reflective: You assess and understand your own strengths and limitations to improve your personal development.

Risk-taker: You approach unfamiliar situations with courage and confidence, explore new ideas, and articulate your beliefs.